

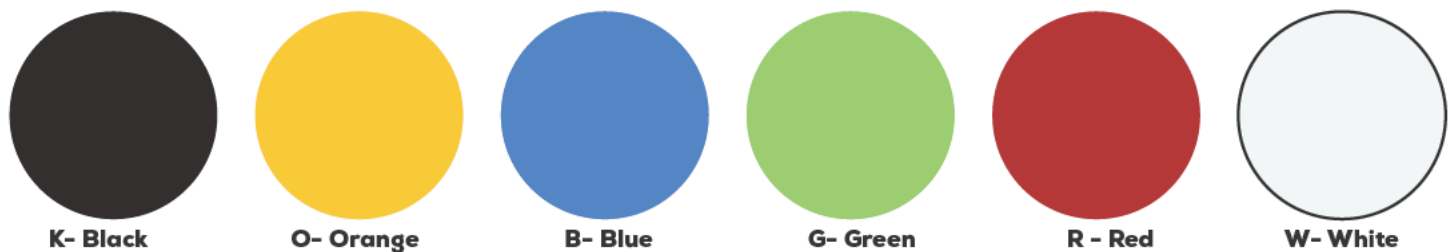
# IMAGETEK TRAINING



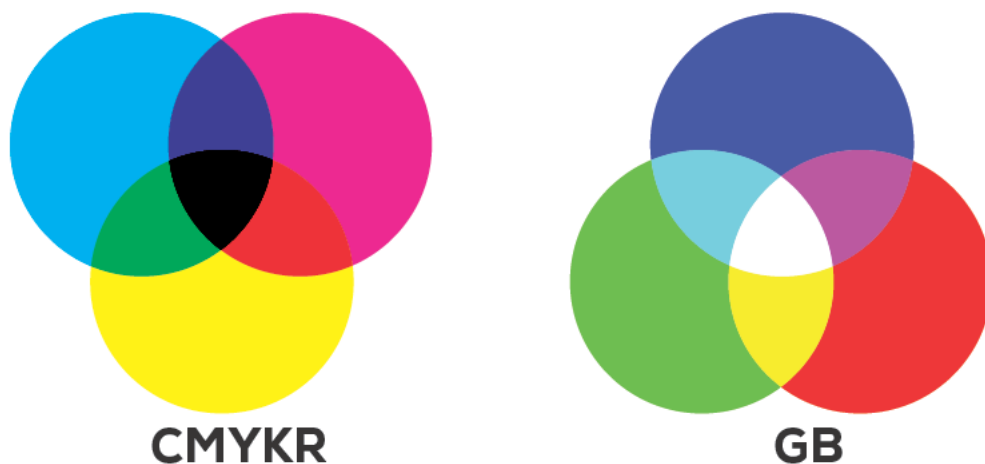
ImageTek™ PRODUCT RANGE	
ImageTek™DESIGN	<p>Enables the printing of artwork, images and patterns working with high resolution digital files: When you have to create or use an image or pattern.</p> <p>This can be an image supplied by the customer, one we have on file or one from a stock image website (we have a licence for Shutterstock, but you can use Unsplash, Freepik or the like).</p> <p>These are normally printed at SuperHigh @ 200%</p>
ImageTek™INTERIORI™	<p>Design collection mimicking stone, marble, wood and other themes:</p> <p>This is a standard range of images/textures supplied by diptech. They are located here: D:\National Glass\DESIGNS\GRAPHICS\INTERIORI\</p> <p>These are normally printed at SuperHigh @ 200%</p>
ImageTek™GRAPHIC	<p>Wide range of designs and patterns to different themes and effects:</p> <p>This is a standard range of images/textures supplied by diptech. They are located here: D:\National Glass\DESIGNS\GRAPHICS\ImageTek Graphic\</p> <p>These are normally printed at SuperHigh @ 200%</p>
ImageTek™COLOUR	<p>100% paint coverage for spandrel cladding applications:</p> <p>These are solid colour jobs. Either picked from the showroom wall, or from a sample.</p> <p>These are normally printed at interlacedFine High 400% (rely on sample)</p>
ImageTek™S1 EXTRA DURABLE	<p>White colour paint designed for external exposure</p> <p>This is a specialty ink only available in black or white.</p> <p>It is only covered by the warranty if printed above 400%</p>
ImageTek™SKY	<p>Overhead glazing print designs</p> <p>These are normally printed at High/FineHigh/SuperHigh at 200% or more. Rely on sample.</p>
ImageTek™FLOOR	<p>Glass flooring anti slip patterns</p> <p>These are a standard range of approved patterns. New patterns have to be texted by engineers.</p> <p>These are printed as:</p> <p>E = 200% ← Anti Slip Paint E2 = 200% ← Anti Slip Paint E3 = 200% ← Anti Slip Paint E4 = 200% ← Anti Slip Paint at HiPress</p>

#### THE DIPTEK MACHINE PRINTS COLOURS BY CODE, NOT LIKE A TRADITIONAL PRINTER.

The ink comes in 6 colours:



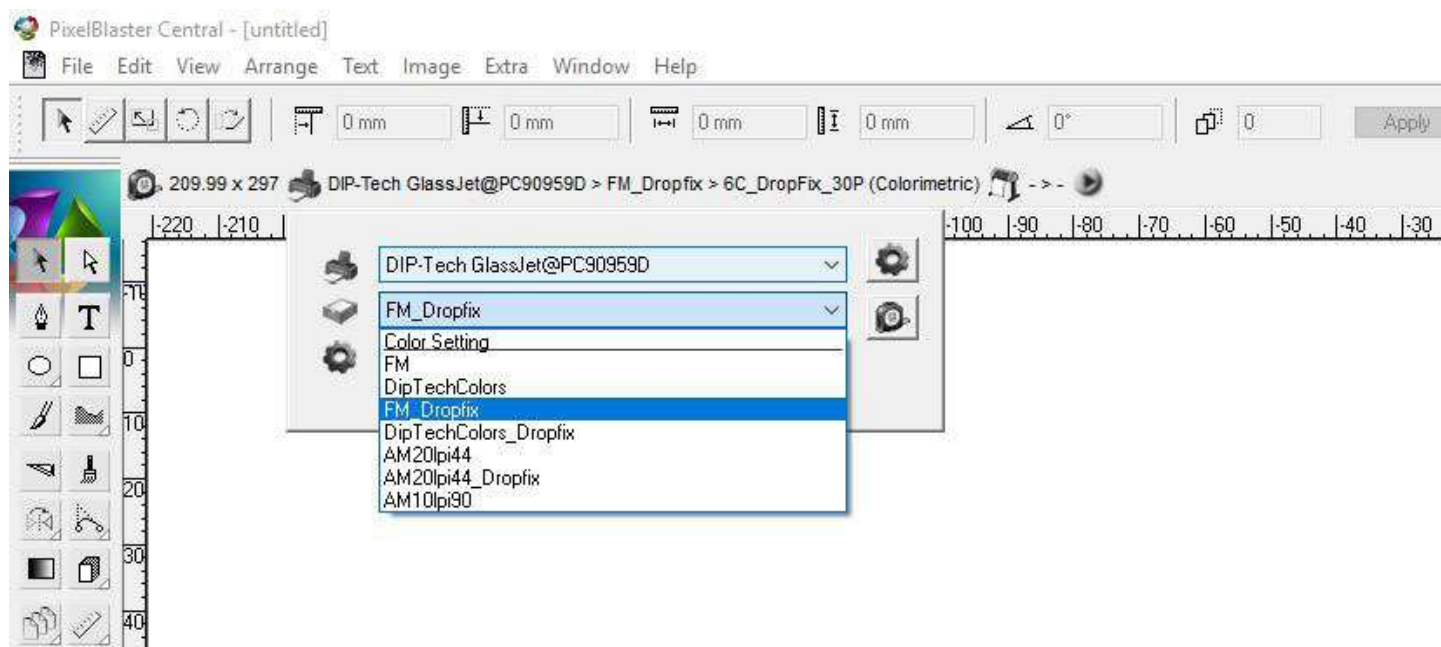
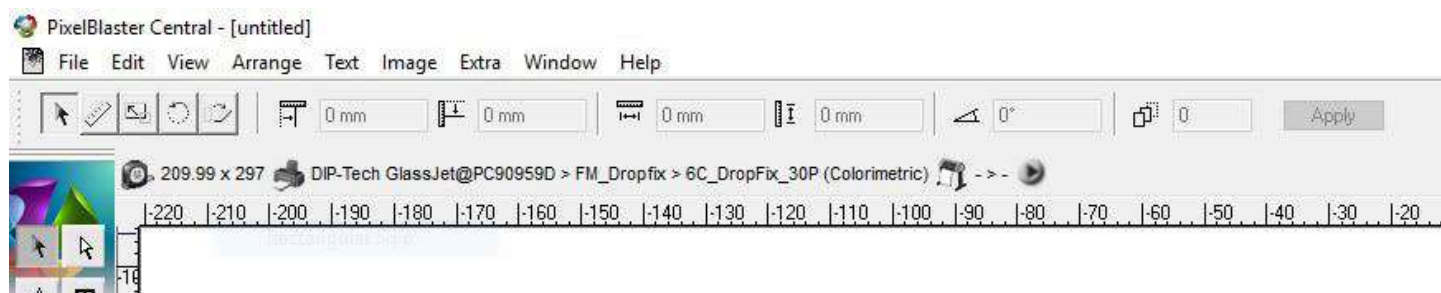
Because there is arsenic in certain colours and it comes from Israel, so they do not provide magenta or cyan, therefore there are some limitations in colour with this process including: Yellows, Pinks, Purples and Cyans. You can read more about the limitations in this article: *An Imaged Based Gamut Analysis of Cermic Inks* - D:\National Glass\TRAINING\



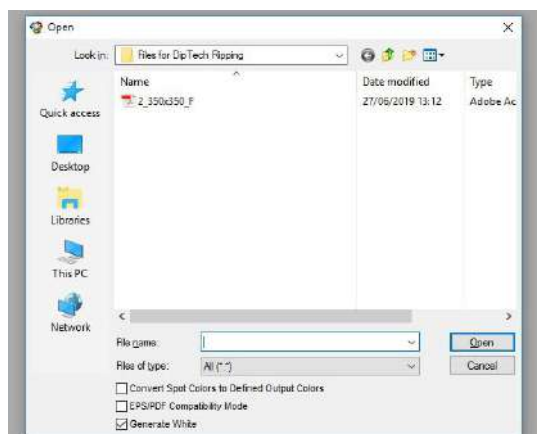
There is a DipTek swatchbook, the CMix website and the excel sheet in the training doc have the recipes and a pantone colour: Pantone Color Bridge Coated.

## How to send an image to the print guys.

- The internal sales guys will send you a document number with ImageTek and normally a description of what they want on it.
- To find a document from the number you login to: <http://xenapp6.bradnams.com.au/Citrix/XenApp/auth/login.aspx> and use the login you have received from HelpDesk.
- Print & highlight all the items that require ImageTek and determine if you have to ask further questions regarding side of print (glass is see through), thickness of ink etc.
- Make an artboard in illustrator to the size of the glass (HxW - the opposite to paper)
- Apply the pattern, colour or graphic to the area
- Save as PDF (RGB 300)
- Name the file: **item number\_ Marks or glass size\_F** (only put F if you are going to flip the panel in PB Central)
- Then place a copy of the file into the folder on the desktop called: "Files for DipTech Ripping"
- Open PB Engine (this has to open before PB Central).
- Then open PB Central



- Check the print settings depending on the job.
- **FM\_Dropfix** is for jobs that use a mixture of ink to create colours (pictures, spandrels of a specific colour not spot).
- **DipTechColours\_Dropfix** is for projects that require only spot colours of ink (patterns with only one spot colour, anti-slip, etc)
- Close the window that is already open. and make sure the **Output** and **Layers** windows are open.
- CRT + O to open the folder: "Files for DipTech Ripping"
- Select the file you want to open.




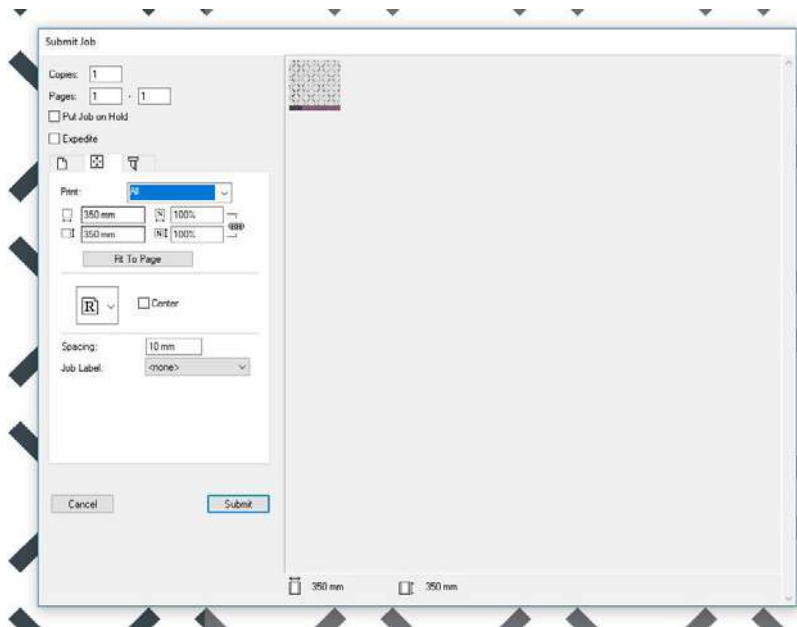
Generate white if you have are printing in FM\_DropFix, and only in DipTechColours\_Dropfix if you are using blue ink and want to block the transparency inherit in that colour ink.

#### PROOF

- Take screenshots of the artwork for approval.
- One so the client can see the whole panel of glass: Name\_Whole.jpg
- Another at 100% resolution to see how the image should pixelat: Name.Pixel.jpg
- Send these away for approval.

#### TO EXPORT THE FILE:

- Press the button with a circle and a black arrow in the middle (next to the printing options) 
- Go to the second tab and check the size is correct.



- Then pick the correct R orientation. This is where the \_F in the name comes in handy to remember if you need to flip or not.
- Press submit.
- Save the file, but don't close it until it has stopped processing in the PB Engine window.
- You can minimise and submit more jobs to export.
- Once they have finished loading in PB Engine you can close the widows.
- The 'Ripped files' will appear in the folder on the Desktop called "Rip - Shortcut"
- Take them out of there and put them into the folder you should have for the project called "Printing Files"
- Take the text file "Template v2 - How to print - 1 step" or create one with the appropriate information.

#### THIS IS CALLED THE RECIPE:

**Filename:**

**Type of Glass:**

**Printing Mode:**

**Glass Thickness:**

**Glass Size:**

**Qty:**

**Dropfix - print in 1 step**

**Step 1:**

**All colour 200%, W = 200%, W2 = 100% (THESE ARE DEPENDANT ON THE JOB).**

\*\*\*\*

If you need the panel to be one way viewing (white backing) you change the number of steps to 2 and then write instructions as:

**Dropfix - print in 2 steps. Dry Step 1 before print Step 2.**

**Step 1:  
SuperHigh**

**All colour = 200%, W = 0%, W2 = 100%**

**Step 2: use file- (supply file)**

**SuperHigh**

**All colour = 0%, W = 600%, W2 = 0% (As needed)**

Most of the information for the above you can get from the document number for each item of glass.

But if you don't know the glass thickness then put a "?" as only the printer (Byrant, Ray or anyone else) will read it to check the glass and enter in the settings.

W2 is your white dencity- it is always half of blue (B).

Step 1- This depends on your job and the settings needed. Refer to sample approved or on the standards.

**AS A GUIDE, THE SPEED DECREASES AS THE QUALITY INCREASES WITH THESE SETTINGS:**

Images and Words - 200% @ SuperHigh

Spandrel - 400% Interlaced FineHigh - Standard

- 800% @ SuperHigh - For light colours or on request

Banding - 400% @ FineHigh

These are all the settings available. You can ask the printer guys if you want more information on them:

- o 1. InterlaceCouple: Need to use 2 ink tanks to print this mode.
- o 2. Couple: Need to use 2 ink tanks to print this mode.
- o 3. Interlace-XPRESS
- o 4. Xpress
- o 5. Interlace-Press: 100%/ea Layer?
- o 6. Press: 200%/ea Layer?
- o 7. HiPress: 300%/ea Layer
- o 8. Interlace Basic: 200%/ea Layer
- o 9. Interlace High: 400%/ea Layer
- o 10. Interlace FineHigh: 600%/ea Layer
- o 11. Basic: 0 - 400%
- o 12. High: 0 - 800%
- o 13. FineHigh: 0 - 1200%
- o 14. SuperHigh: 0 - 1600%

The numbers after the setting indicate the highest amount of ink it can use.

- Then you open the folder called: **"Printing files (192.168.30.5) - Shortcut"**
- In this folder you place the printing files in a folder named: document number\_job name or description
- Always place the file in the latest dated folder
- Then you log the job in excel for reference.

	A	B	C	D	E	F	G	H
	Order #	Name	Note/Location	Sent to proofread	Approved	Artwork Done in AI	Output through Pixel Blaster	Upload to DipTech's Printing Folder
3917		54_L3_82.pdf						
3918		55_L3_90.pdf						
3919		56_L3_94A.pdf						
3920		57_L3_94B.pdf						
3921		58_L3_100.pdf						
3922		59_L3_115.pdf						
3923		6_L1_34A.pdf						
3924		60_L3_125.pdf						
3925		7_L1_34B.pdf						
3926		8_L1_41.pdf						
3927		9_L1_56.pdf						
3928								
3929	1280083	Penny's meeting on Thursday panels	D:\National Glass\DESIGNS\DIP-TECH\Penny Everett\Baicardine\	Y	Y	Y	Y	20190702
3930		1_350x350_F.pdf						
3931		2_350x350_F.pdf						
3932		3_350x350_F.pdf						
3933								
3934	1280219	Julay Lime Green	D:\National Glass\DESIGNS\DIP-TECH\David Thompson\Juicy Lime 510G6\1280219\	Y	Y	Y	Y	20190702
3935		1_2626x248.pdf						
3936								
3937	1281462	Doors	D:\National Glass\DESIGNS\DIP-TECH\Regan Alexander\0000000_Sound Doors\	Y	Y	Y	Y	20190705



## NOTES:

Images tend to turn a bit dull. Sales staff should already know this but often they forget.  
Patterns may need to span over panels that may be glazed next to each other. Ask before you export if this is the case or if there is a frame that will obscure the edges. Also note the direction of the pattern especially for awnings, ask for a map if you haven't received one and always ask the question as you don't want them to start glazing and not like the result.  
The printer can only furnace panels 2700x5000 (360DPI) and the panel needs to be square on the bottom left for the machine to align. Remember when you flip a panel the new left bottom still need to be square in the final outcome.

## INSIDE OR OUTSIDE VIEW:

This determines if you need to flip the panel in PB Central or leave it as it is.

When people measure the space for the window they are either measuring from the inside of the 'room' or 'outside'.

Basically we want to know which surface of their drawing do they want the print. For a splashback you want it on the side closest to the wall. For a boat you want it facing inside the boat (but stamps to be read from outside so stamps reversed in AI but don't flip in PB Central).

You can confirm with internal sales or the client, but if they have ordered before they are often consistent with how they measure/map windows and so you can refer to old jobs and see if they were flipped ("\_F").

For some of these notes you can ask the salesperson or client to answer the **ImageTek Questionnaire**: D:\National Glass\DESIGNS\FORM\ImageTek™ Digitally Printed Glass Questionnaire\

Or the you can provide the **ImageTek Design Specifications**: D:\National Glass\DESIGNS\FORM\ImageTek™ Design Specifications\

Discuss with Tony if you want to change these documents.

## PATTERNS:

Interior patterns can be found in the folder: D:\National Glass\DESIGNS\PATTERNS\Patterns from DipTech\

These are patterns ready to go, just have a colour ready and process them in AI.

Once a pdf has been exported through PB Central, you then have a folder with TIF files. You can change the letter in the file name corresponding with the ink colour to change if you need, but it is easy to change the colour in AI, this is handy for jobs that you want to print at a fast pace but with heavier weight of ink than that pace allows (High @ 1200). You can make duplicates and give them a new name that places a number after the letter, skipping W2 to W3, as W@ is reserved for white density (for when you print blue).

Often you will receive a sample of a pattern, either physically or digitally with a request to replicate it.

Sampling is essential, but once they have a sample approved you only need to reproduce that result.

Note that sales people will want to use your samples for other jobs and might even give them to clients, so remember to label your samples so you know for the future. What the print mode/setting was, the thickness of ink, the RGB colour etc.

S1 has to be printed at 400% to be covered by warranty, refer to warranty paperwork: D:\National Glass\DipTech\Files from Dip Tech\Extra Durable Paint - For External\  
or talk to Tony

## BOOKMARKS AND PASSWORDS:

<a href="http://192.168.34.28/capacity-machine.php?id=247">http://192.168.34.28/capacity-machine.php?id=247</a>	To see the production capacity graphs of the factories
<a href="http://www.shutterstock.com">http://www.shutterstock.com</a>	Login in: [REDACTED] Password: [REDACTED]
<a href="https://www.pexels.com/">https://www.pexels.com/</a>	Free
<a href="https://pixabay.com/">https://pixabay.com/</a>	Free
<a href="https://www.freepik.com/">https://www.freepik.com/</a>	Free
<a href="https://unsplash.com/">https://unsplash.com/</a>	Free
<a href="http://mkweb.bcgsc.ca/color-summarizer/?analyze">http://mkweb.bcgsc.ca/color-summarizer/?analyze</a>	For when people ask what ratio a pattern is for light vs shade
<a href="http://bdlwebp1:3128/default.aspx">http://bdlwebp1:3128/default.aspx</a>	Helpdesk should give you a log in
<a href="http://www.service.dip-tech.com/">http://www.service.dip-tech.com/</a>	Login: [REDACTED] Password: [REDACTED]
<a href="http://xenapp6.bradnams.com.au/Citrix/XenApp/auth/login.aspx">http://xenapp6.bradnams.com.au/Citrix/XenApp/auth/login.aspx</a>	To get to to GPS . Helpdesk should give you a log in
<a href="http://connx.bradnams.com.au/frmLogin.aspx">http://connx.bradnams.com.au/frmLogin.aspx</a>	To access payslip and leave etc. Helpdesk should give you a log in
<a href="https://mailchimp.com/">https://mailchimp.com/</a>	Login: [REDACTED] Password: [REDACTED]
<a href="https://bdlxenapp6.bradnams.com.au/Citrix/XenApp7Web/">https://bdlxenapp6.bradnams.com.au/Citrix/XenApp7Web/</a>	Helpdesk should give you a log in
<a href="#">adobe creative cloud</a>	Login: [REDACTED] Password: [REDACTED] -- See helpdesk about changing this subscription.
<a href="https://www.nationalglass.com.au/wp-login.php">https://www.nationalglass.com.au/wp-login.php</a>	Login in: [REDACTED] Password: [REDACTED] If you have any issues with the wordpress website contact me or Kristian: [REDACTED]



**DipTech:**

graphic.diptech@ferro.com -- this should be your main person of contact, but if they do not respond:

**In emergencies you can contact:**

Gady Ginzburg (previous contact, now has a different region)

Technical Sales and Design Specialist

Office +1 855 385 8188 x1004

Mobile +1 401 450 4959

Mail gady.ginzburg@ferro.com

www.dip-tech.com